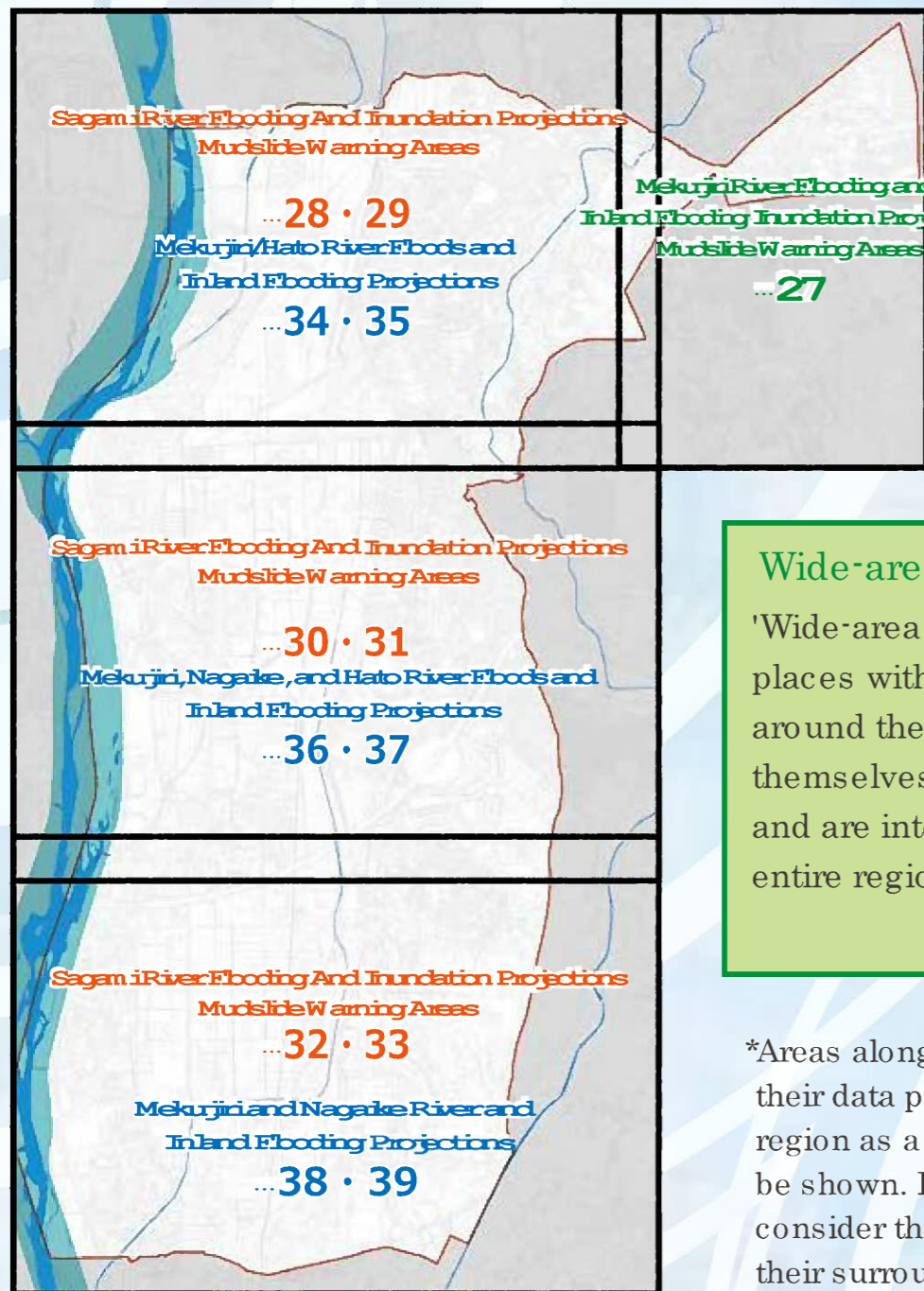


Hazard map index

This map indicates the projected flooding area, housing destruction area and mudslide warning area by the Sagami, Mekujiri, Hato, and Nagaike rivers in the event that they flood, as created by Kanagawa prefecture. Inland flooding projections are made by the city.

Expected rain (to cause a flood)

- Sagami river... Calculated based on rain of the volume that occurs roughly once in a thousand years. 567mm in 48 hours, bursting levees in 219 spots and flowing over one in one case, for a total of 220 cases.
*Depending on locations of burst levees, inundated areas and open evacuation spots will vary.
- Mekujiri river... 398mm in 24 hours
- Hato river... 326mm in 24 hours
- Nagaike river... 304mm in 24 hours
- Inland... 102mm in one hour

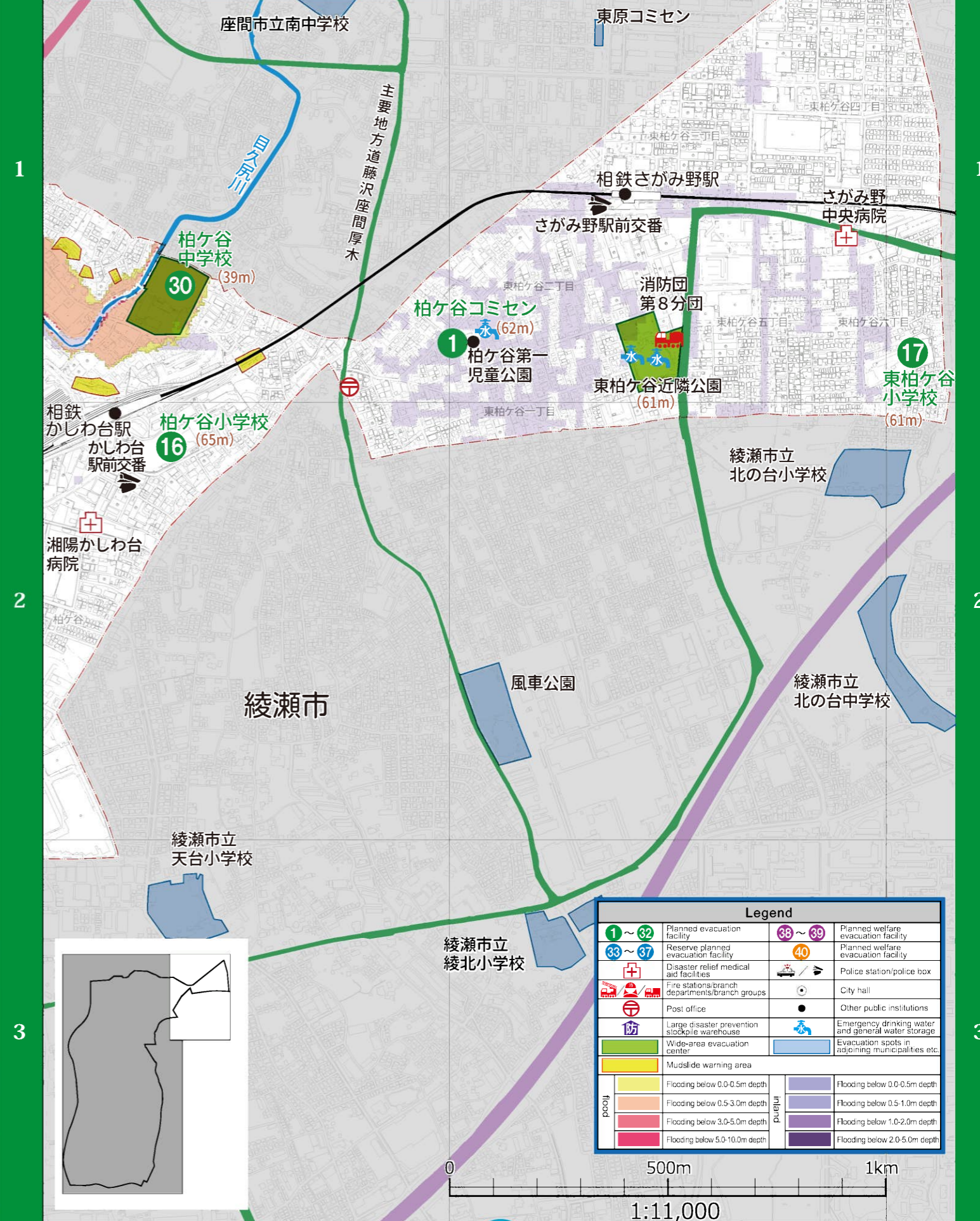


Wide-area evacuation spots

'Wide-area evacuation spots' are places with enough open space around them to protect themselves from spreading fires, and are intended for when the entire region is endangered.

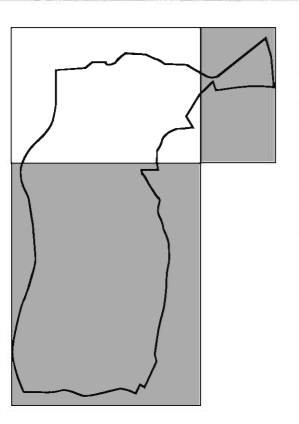
*Areas along various rivers have their data processed for the entire region as a river, so colors may not be shown. For this purpose, consider their color the same as their surroundings for inundation level.

Mekujiri River Flooding and Inland Flooding Inundation Projections Mudslide Warning Areas

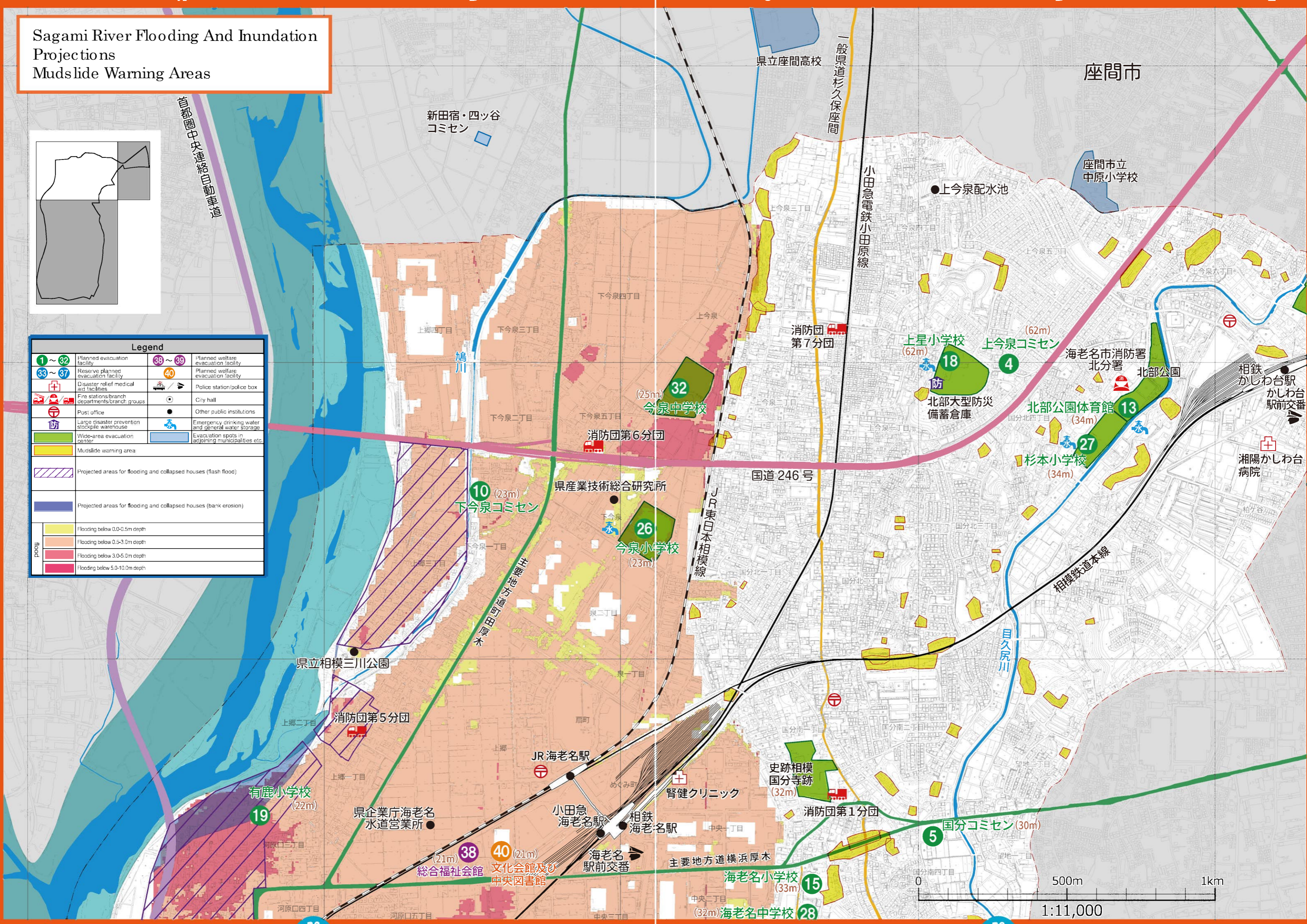


| Legend | | | |
|---------|--|---------|--|
| ① ~ ③② | Planned evacuation facility | ③③ ~ ③⑦ | Planned welfare evacuation facility |
| ③③ ~ ③⑦ | Reserve planned evacuation facility | ④① | Planned welfare evacuation facility |
| + | Disaster relief medical aid facilities | 🚓 | Police station/police box |
| 🚒 | Fire stations/branch departments/branch groups | 🏛️ | City hall |
| 📮 | Post office | ● | Other public institutions |
| 🏠 | Large disaster prevention stockpile warehouse | 💧 | Emergency drinking water and general water storage |
| 🏠 | Wide-area evacuation center | 🏠 | Evacuation spots in adjoining municipalities etc. |
| 🟡 | Mudslide warning area | | |
| 🟡 | Flooding below 0.0-0.5m depth | 🟡 | Flooding below 0.0-0.5m depth |
| 🟠 | Flooding below 0.5-3.0m depth | 🟠 | Flooding below 0.5-1.0m depth |
| 🔴 | Flooding below 3.0-5.0m depth | 🔴 | Flooding below 1.0-2.0m depth |
| 🟠 | Flooding below 5.0-10.0m depth | 🟠 | Flooding below 2.0-5.0m depth |

Sagami River Flooding And Inundation Projections Mudslide Warning Areas

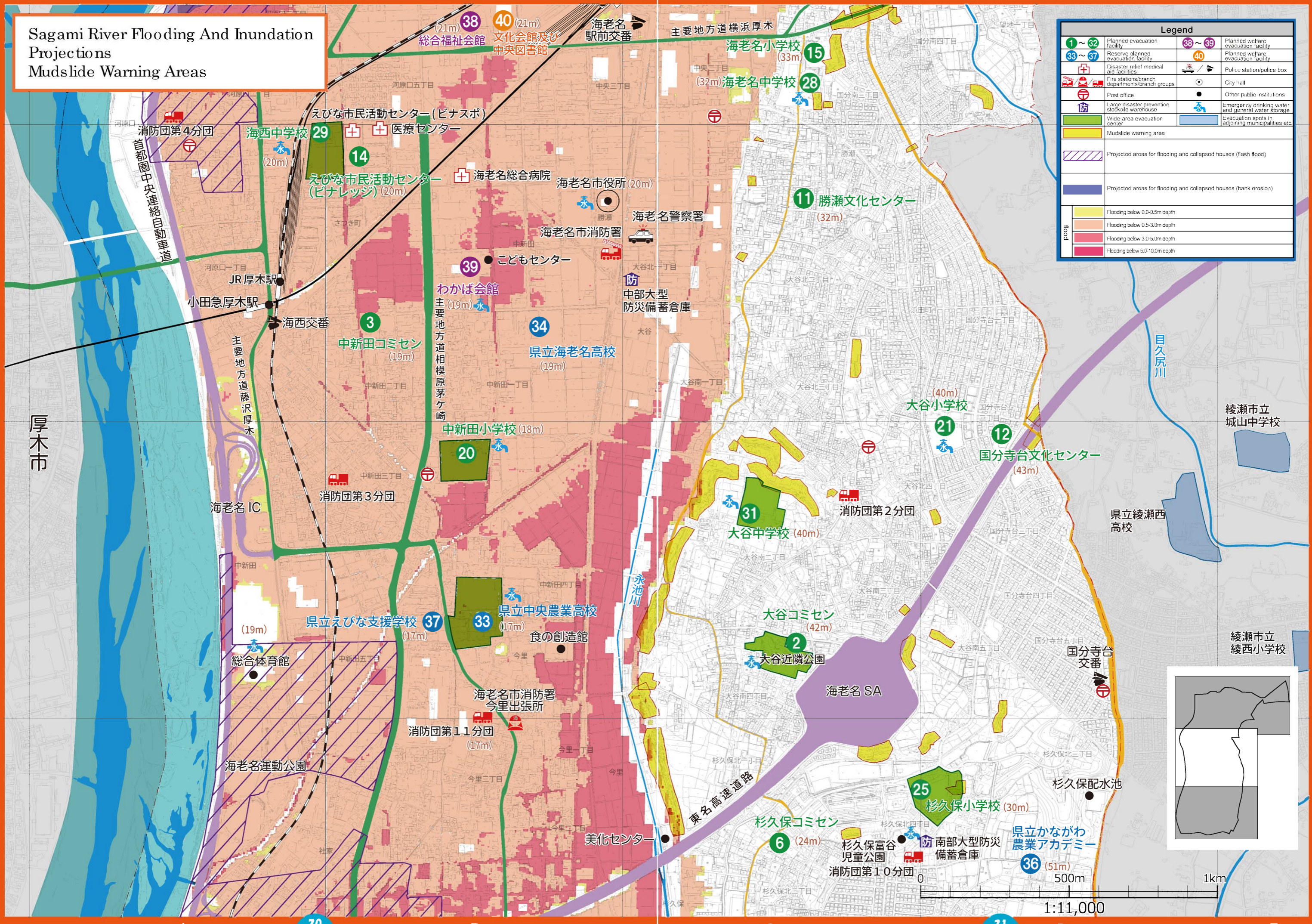


| Legend | | | |
|---------|--|---------|--|
| 1 ~ 32 | Planned evacuation facility | 38 ~ 39 | Planned welfare evacuation facility |
| 33 ~ 37 | Reserve planned evacuation facility | 40 | Planned welfare evacuation facility |
| + | Disaster relief medical aid facilities | 🚓 | Police station/police box |
| 🚒 | Fire stations/branch departments/branch groups | 🏛️ | City hall |
| 📮 | Post office | ● | Other public institutions |
| 防 | Large disaster prevention stockpile warehouse | 🚰 | Emergency drinking water and general water storage |
| 🟢 | Wide-area evacuation center | 🚰 | Evacuation spots in adjoining municipalities etc. |
| 🟡 | Mudslide warning area | | |
| 🟡/🟠 | Projected areas for flooding and collapsed houses (flash flood) | | |
| 🟠 | Projected areas for flooding and collapsed houses (bank erosion) | | |
| 🟡 | Flooding below 0.0-0.5m depth | | |
| 🟠 | Flooding below 0.5-3.0m depth | | |
| 🟡/🟠/🟢 | Flooding below 3.0-5.0m depth | | |
| 🟡/🟠/🟢/🟣 | Flooding below 5.0-10.0m depth | | |



Sagami River Flooding And Inundation Projections Mudslide Warning Areas

| Legend | | | |
|---------|--|---------|--|
| 1 ~ 32 | Planned evacuation facility | 38 ~ 39 | Planned welfare evacuation facility |
| 33 ~ 37 | Reserve planned evacuation facility | 40 | Planned welfare evacuation facility |
| + | Disaster relief/medical aid facilities | 🚓 | Police station/police box |
| 🚒 | Fire stations/branch departments/branch groups | 🏛️ | City hall |
| 📮 | Post office | 🏠 | Other public institutions |
| 🏭 | Large disaster prevention stockpile warehouse | 💧 | Emergency drinking water and general water storage |
| 🟢 | Wide-area evacuation center | 🚶 | Evacuation spots in adjoining municipalities etc. |
| 🟡 | Mudslide warning area | | |
| 🟠 | Projected areas for flooding and collapsed houses (flash flood) | | |
| 🟣 | Projected areas for flooding and collapsed houses (bank erosion) | | |
| 🟡 | Flooding below 0.0-0.5m depth | | |
| 🟠 | Flooding below 0.5-3.0m depth | | |
| 🟡 | Flooding below 3.0-5.0m depth | | |
| 🟣 | Flooding below 5.0-10.0m depth | | |



3
4
5
6

3
4
5
6

A

B

C

D

E

A

B

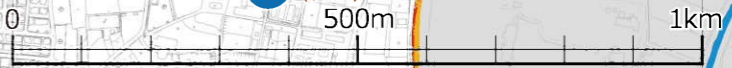
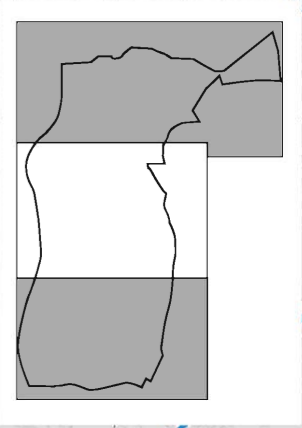
C

D

E

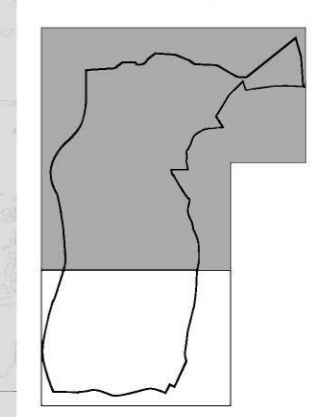
30

31

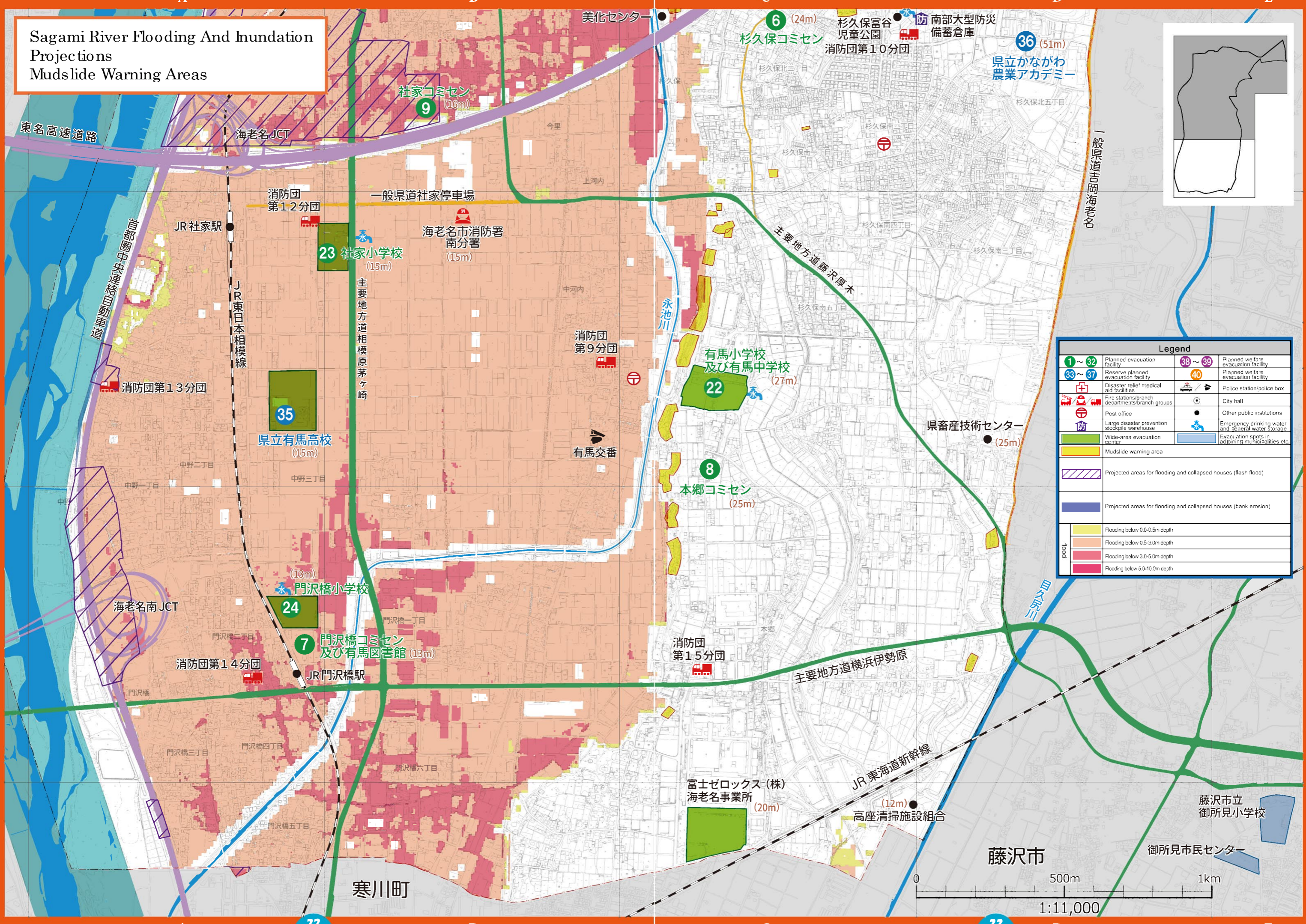


1:11,000

Sagami River Flooding And Inundation Projections Mudslide Warning Areas



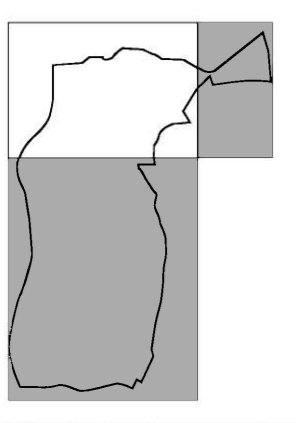
| Legend | | | |
|---------|--|---------|--|
| 1 ~ 32 | Planned evacuation facility | 38 ~ 39 | Planned welfare evacuation facility |
| 33 ~ 37 | Reserve planned evacuation facility | 40 | Planned welfare evacuation facility |
| + | Disaster relief medical aid facilities | 🚓 | Police station/police box |
| 🚒 | Fire stations/branch departments/branch groups | 🏛️ | City hall |
| 📮 | Post office | ● | Other public institutions |
| 🚒 | Large disaster prevention stockpile warehouse | 💧 | Emergency drinking water and general water storage |
| 🟩 | Wide-area evacuation center | 🟦 | Evacuation spots in adjoining municipalities etc. |
| 🟡 | Mudslide warning area | | |
| 🟪 | Projected areas for flooding and collapsed houses (flash flood) | | |
| 🟩 | Projected areas for flooding and collapsed houses (bank erosion) | | |
| 🟡 | Flooding below 0.0-0.5m depth | | |
| 🟠 | Flooding below 0.5-3.0m depth | | |
| 🟤 | Flooding below 3.0-5.0m depth | | |
| 🟢 | Flooding below 5.0-10.0m depth | | |



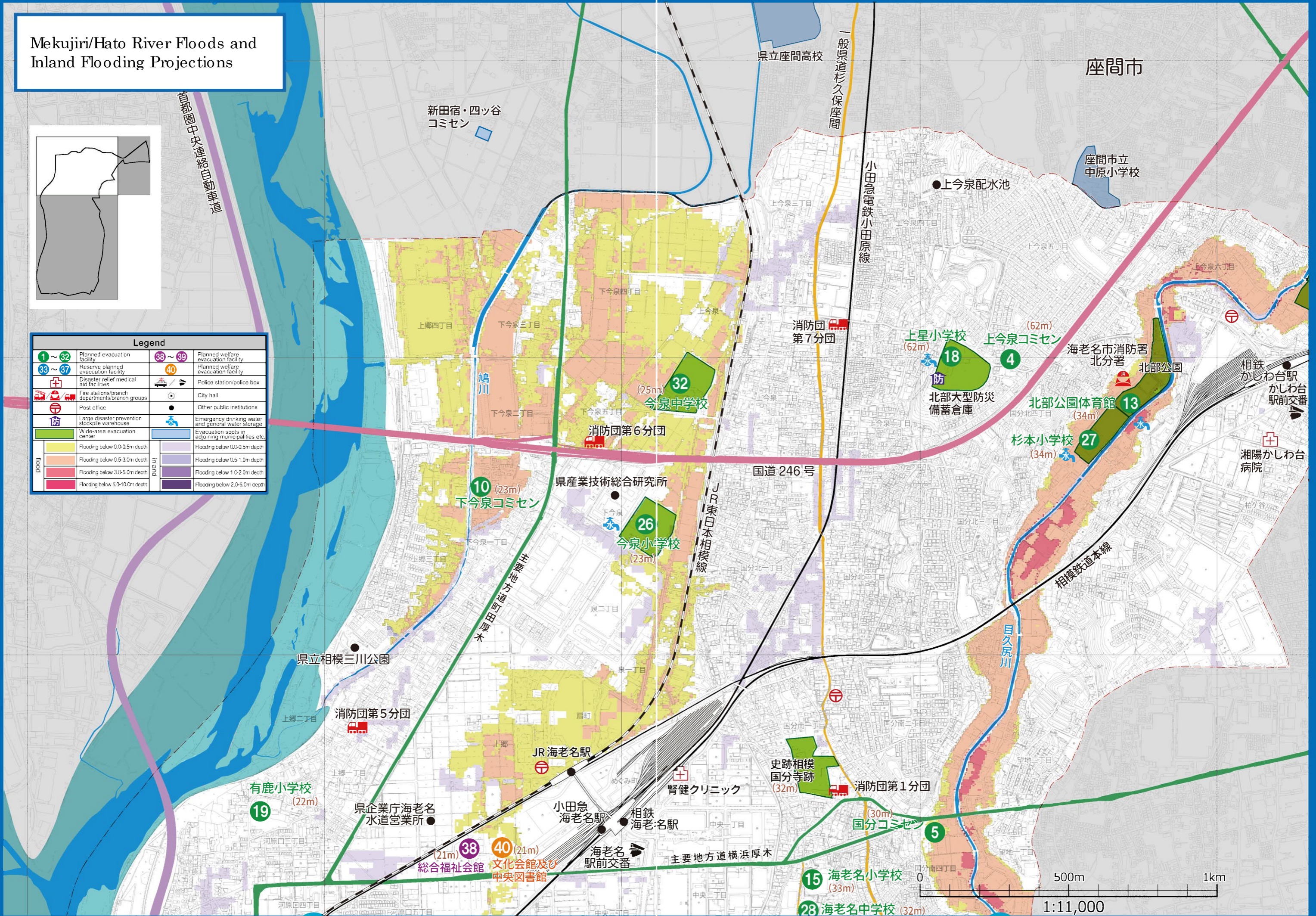
32

33

Mekujiri/Hato River Floods and Inland Flooding Projections



| Legend | | | |
|---------|--|---------|--|
| 1 ~ 32 | Planned evacuation facility | 38 ~ 39 | Planned welfare evacuation facility |
| 33 ~ 37 | Reserve planned evacuation facility | 40 | Planned welfare evacuation facility |
| + | Disaster relief medical aid facilities | 🚓 | Police station/police box |
| 🚒 | Fire stations/branch departments/branch groups | 🏛️ | City hall |
| 📮 | Post office | ● | Other public institutions |
| 🏠 | Large disaster prevention stockpile warehouse | 💧 | Emergency drinking water and general water storage |
| 🏠 | Wide-area evacuation center | 🏠 | Evacuation spots in adjoining municipalities etc. |
| 🟡 | Flooding below 0.0-0.5m depth | 🟡 | Flooding below 0.0-0.5m depth |
| 🟠 | Flooding below 0.5-3.0m depth | 🟠 | Flooding below 0.5-1.0m depth |
| 🔴 | Flooding below 3.0-5.0m depth | 🔴 | Flooding below 1.0-2.0m depth |
| 🟠 | Flooding below 5.0-10.0m depth | 🟠 | Flooding below 2.0-5.0m depth |



A

34

B

C

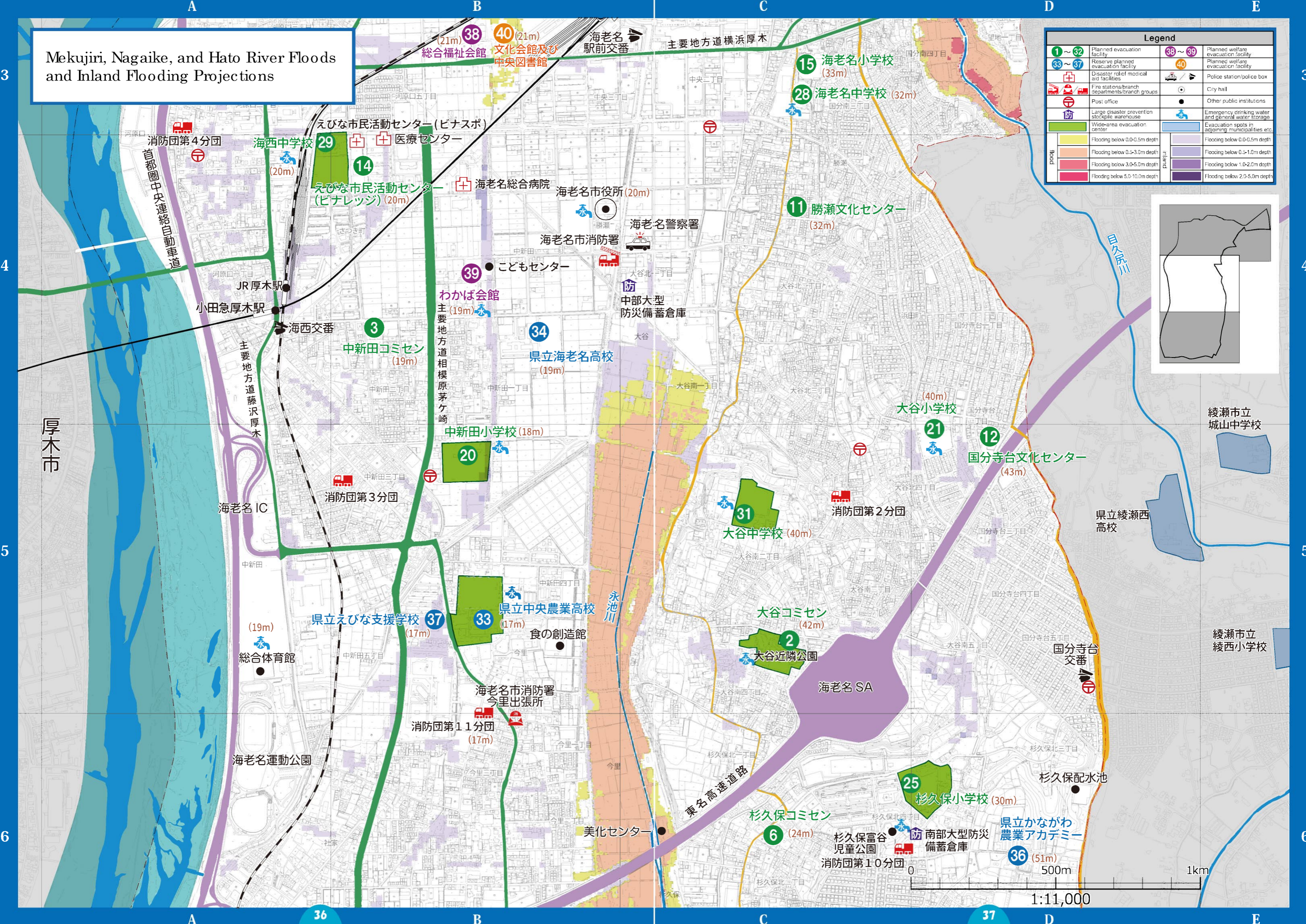
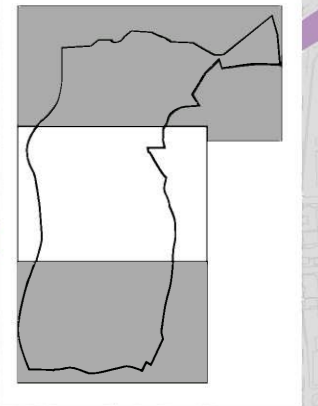
35

D

E

Mekujiri, Nagaike, and Hato River Floods and Inland Flooding Projections

| Legend | | | |
|---------|--|---------|--|
| 1 ~ 32 | Planned evacuation facility | 38 ~ 39 | Planned welfare evacuation facility |
| 33 ~ 37 | Reserve planned evacuation facility | 40 | Planned welfare evacuation facility |
| | Disaster relief medical aid facilities | | Police station/police box |
| | Fire stations/branch departments/branch groups | | City hall |
| | Post office | | Other public institutions |
| | Large disaster prevention stockpile warehouse | | Emergency drinking water and general water storage |
| | Wide-area evacuation center | | Evacuation spots in adjoining municipalities etc. |
| | Flooding below 0.0-0.5m depth | | Flooding below 0.0-0.5m depth |
| | Flooding below 0.5-3.0m depth | | Flooding below 0.5-1.0m depth |
| | Flooding below 3.0-5.0m depth | | Flooding below 1.0-2.0m depth |
| | Flooding below 5.0-10.0m depth | | Flooding below 2.0-5.0m depth |



1:11,000



厚木市

綾瀬市立
城山中学校

綾瀬市立
綾西小学校

県立綾瀬西
高校

県立かながわ
農業アカデミー

杉久保小学校 (30m)

杉久保コミセン (24m)

海老名市消防署
今里出張所

県立えびな支援学校 (17m)

海老名運動公園

海老名 IC

小田急厚木駅

消防団第4分団

海西中学校 (20m)

えびな市民活動センター (ビナスポ)

えびな市民活動センター (ビナレッジ) (20m)

海老名総合病院

海老名市役所 (20m)

海老名警察署

海老名市消防署

わかば会館 (19m)

主要地方道相模原茅ヶ崎

中新田コミセン (19m)

県立海老名高校 (19m)

中新田小学校 (18m)

県立中央農業高校

食の創造館

消防団第11分団 (17m)

美化センター

海老名 SA

大谷コミセン (42m)

大谷近隣公園

大谷中学校 (40m)

消防団第2分団

大谷小学校 (40m)

国分寺台文化センター (43m)

消防団第2分団

国分寺台交番

杉久保配水池

消防団第10分団

杉久保富谷児童公園

防 南部大型防災備蓄倉庫

3

4

5

6

A

B

C

D

E

3

4

5

6

A

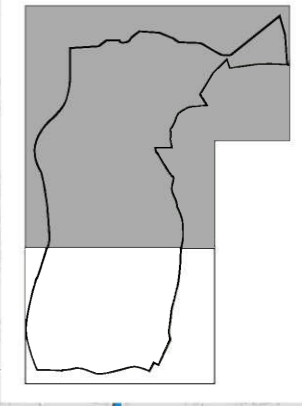
B

C

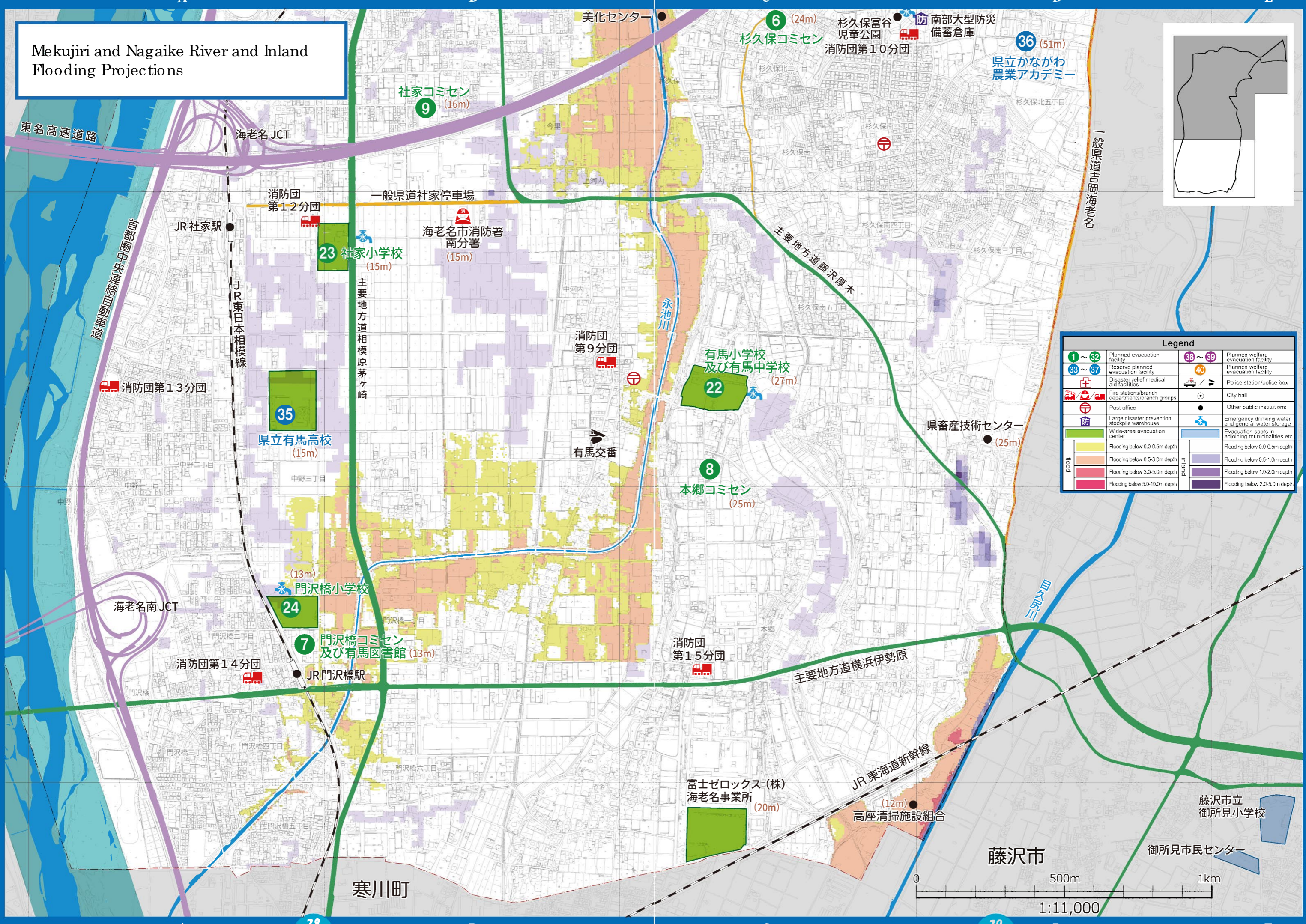
D

E

Mekujiri and Nagaike River and Inland Flooding Projections



| Legend | | | |
|---------|--|---------|--|
| 1 ~ 32 | Planned evacuation facility | 38 ~ 39 | Planned welfare evacuation facility |
| 33 ~ 37 | Reserve planned evacuation facility | 40 | Planned welfare evacuation facility |
| + | Disaster relief medical aid facilities | 🚓 | Police station/police box |
| 🚒 | Fire stations/branch departments/branch groups | 🏛️ | City hall |
| 📮 | Post office | ● | Other public institutions |
| 🏠 | Large disaster prevention stockpile warehouse | 🚰 | Emergency drinking water and general water storage |
| 🏠 | Wide-area evacuation center | 🏠 | Evacuation spots in adjoining municipalities etc. |
| 🌊 | Flooding below 0.0-0.5m depth | 🌊 | Flooding below 0.0-0.5m depth |
| 🌊 | Flooding below 0.5-3.0m depth | 🌊 | Flooding below 0.5-1.0m depth |
| 🌊 | Flooding below 3.0-5.0m depth | 🌊 | Flooding below 1.0-2.0m depth |
| 🌊 | Flooding below 5.0-10.0m depth | 🌊 | Flooding below 2.0-5.0m depth |



6
7
8
9

6
7
8
9

A

B

C

D

E

A

B

C

D

E

38

39